



# Pneumatic II Spray Texture Gun

*Applies interior wall and ceiling textures*

Model #4610 • Air Compressor/HVLP Operated

The Homax Pneumatic II Spray Texture Gun is designed to spray Homax premixed wall and ceiling textures or mix-yourself dry textures.

The Homax Pro Hopper Accessory #4505P is needed when mixing your own texture materials. Follow the manufacturer's mixing instructions to obtain correct consistency.



## *In preparation:*

- A 3/4 hp or larger compressor which delivers a minimum of 2.7 cfm at 40 psi will operate your **Pneumatic II**.
- HVLP Spray Units rated 80 cfm or larger will also work with the **Pneumatic II**.
- Always protect surrounding area from over-spray, especially furniture and carpet, by covering with drop cloths and masking where necessary.
- Prepare surface by removing grease, loose plaster, peeling paint, etc. Texture will adhere to most clean surfaces. Priming drywall surfaces prior to texturing is recommended by most drywall texture manufacturers.

**WARNING:** Always wear eye protection when using this product.

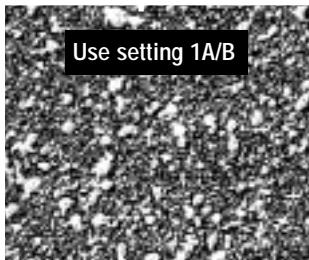


Pro Hopper  
#4505P



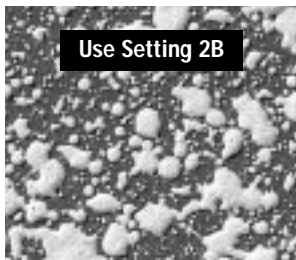
**Important:** Read all instructions thoroughly before use.

## *Unpainted Texture:*



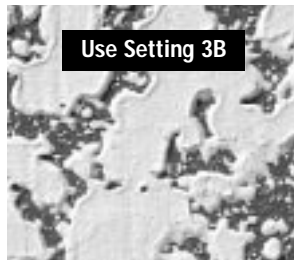
Use setting 1A/B

Orange Peel Texture  
Pelure d'orange • Monda de naranja



Use Setting 2B

Splatter Texture  
Éclaboussure • Rociado



Use Setting 3B

Knockdown Texture  
À plat • Raseado

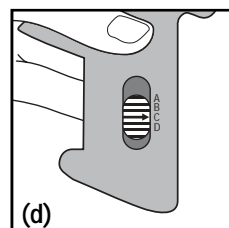
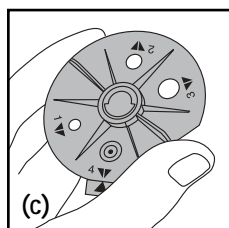
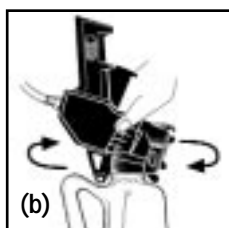
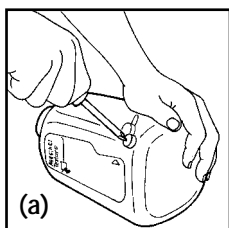


Use Setting 4C/D

Acoustic Ceiling Texture  
Plafond acoustique • Techo acústico

## *Before you begin:*

1. Shake texture well
2. Open breather cap and puncture breather hole on texture bottle. (a) A small phillips head screwdriver works well. Close cap over breather hole.
3. Remove the snap cap from bottle. Snap gun firmly onto texture bottle and twist. Make sure that the bottle lock on the gun passes through the slot on the top of the bottle and the pin engages in the opposite hole. (b) Turn bottle lock 90°.
4. Select desired texture pattern. (see texture samples)
5. Adjust gun settings to control the various texture patterns:  
**Nozzle Plate (c)** controls the size of the individual splatters, the larger the hole, the larger the splatter size.  
**Volume Control Switch (d)** on the handle controls the volume of texture material and the size of the cone-shaped spray pattern.
6. Connect compressor air hose to gun. Turn on compressor and set pressure at 25 - 35 psi.  
**Warning:** Do not adjust pressure to exceed 70 psi.



**Note:** Your Pneumatic Gun comes with a proprietary, HP-HVLP aluminum quick-disconnect fitting which works with either a female HP quick-disconnect or a 3/4" HVLP quick-disconnect coupler. If the compressor hose does not have a quick-disconnect you will need to unscrew this fitting and connect your hose to the female 1/4" npt brass inlet. Some compressor hoses may require an adapter to connect to the gun's fitting.

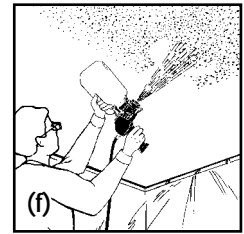
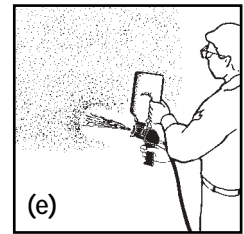
**7. Check Valve Ball:** If using a portable air supply, or a small compressor with a tank, leaving the Check Valve Ball in the gun will allow the air to shut off when the trigger is released, conserving the volume (and hence the pressure) of air in the tank. A slight decrease in texture appearance may result from using intermittent air flow. Larger compressors may be able to maintain a desired pressure and volume of air. If using this type of compressor, removing the Check Valve Ball will let air continuously flow through the gun and may allow for better control of the spray pattern.

**Powering a Pneumatic II Gun with a HVLP Sprayer:** HVLP (High Volume Low Pressure) Spray Units rated 80 cfm or larger will also operate your Pneumatic II. However, some limitations on pattern settings and speed will apply when using an HVLP unit. Mid-range spray pattern settings tend to work best. Some HVLP units (i.e. Titan) contain a motor speed reducer or "Flow Switch" which must be turned to the "ON" position when used with the Pneumatic Gun. This allows the unit to bypass the flow or turbine controls, and allows the turbine to run at full speed (see Titan instruction manual if using this HVLP unit).

The **Check Ball** must be removed if you are using an HVLP spray unit in order to prevent the turbine from excessive wear and overheating. Unscrew the aluminum fitting and the check ball retainer allowing the check ball to roll out. It is not necessary to replace the check ball retainer. However, keep it and the check ball for future use. Replace the aluminum HP-HVLP quick-disconnect fitting. The proprietary aluminum quick-disconnect gun fitting will attach directly to your female HVLP quick-disconnect.

## ***Applying the Texture***

1. Hold gun with bottle on top. Make sure breather cap is punctured and open.
  - Stand approximately 3 - 4 feet from wall surface (approx. 2 ft. for ceilings).
  - Pull trigger to start both air and material flow.
  - Move gun in a slow sweeping motion as you begin spraying. **(e)**
  - Test spray pattern on sample surface until you obtain the desired pattern.  
If desired pattern is not achieved, texture can be scraped off while it is still wet.
2. When spraying a ceiling, material must be able to gravity feed from the texture bottle into the gun chamber. **(f)**
3. Variations in spray patterns can be achieved by making adjustments in the following areas:
  - Changing the nozzle plate or volume control adjustments.
  - Standing closer or further away from the wall or ceiling as you spray.
  - Increasing or decreasing air pressure slightly.
  - Thinning texture material with a very small amount of water (up to 1/4 cup per bottle).
4. For a Knockdown or "Mediterranean" texture, allow material to begin to set up after spraying (approx. 10-15 minutes). Then, using a wide blade drywall knife or trowel, lightly flatten, or knock down the splatter by gently troweling over the texture in all directions. Hold the knife at a 10°-20° angle to the wall (almost parallel to the wall surface).



## ***Cleaning Your Pneumatic II Gun***

1. It's not necessary to disassemble the gun for routine cleaning.
  2. Disconnect compressor hose from gun.
  3. Turn bottle lock and remove bottle from gun.
  4. Remove nozzle plate by aligning flat edge with guide, rinse with water.
  5. Rinse chamber of gun using warm water and a soft bristle brush.
- Do not soak or immerse gun in water or solvent, as this removes the protective grease from the gun parts.

## ***Trouble Shooting***

**Problem: Texture does not spray or atomize.**

- Is breather hole on texture bottle punctured and breather cap open?
- Texture may be too thick. Thin with a small amount of water, a little at a time.
- Is texture bottle nearly empty? Shake texture down into gun chamber.

**Problem: Globbs or spitting at nozzle.**

- When spraying at a downward angle with a full container of texture, make sure the texture does not block the breather hole.
- Clean the nozzle area on the gun.

**Problem: Texture material drips and/or runs.**

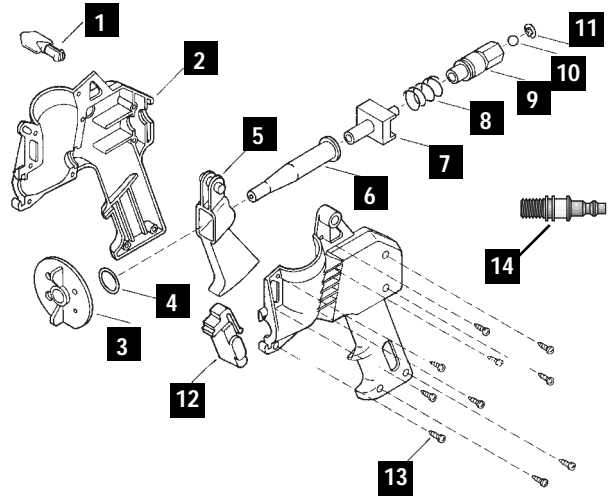
- Shake texture thoroughly.
- Texture material may be too thin.
- You may be too close to the surface, move back.
- Try sweeping gun faster as you spray.

**Problem: Won't spray acoustic texture**

- Check to make sure gun is on 4C or 4D.

**For technical assistance call 1-800-729-9029**

**Spare Parts Order Form:**



Item	Part #	Description	Price/ea.	Qty.	Price
1	10-328	Bottle Lock	\$	1.25	
2	10-330	Gun Housing (2 pcs)		15.00	
3	10-342	Front Plate		3.95	
4	10-421	O-Ring (#114)		.65	
5	10-339	Trigger		4.00	
6	10-333	Nozzle		3.50	
7	10-336	Check Valve Plunger		2.50	
8	10-351	Spring		1.10	
9	10-357	Check Valve Body (brass)		6.50	
10	10-320	Check Valve Ball		.30	
11	10-335	Check Valve Ball retainer		.30	
12	10-345	Adjusting Slide		2.50	
13	10-313	#6 x 1/2" Screw (10)		.15ea	
14	10-3542	HP-HVLP Quick-Disconnect Fitting		5.95	
			subtotal		
			WA Residents add 7.9% sales tax		
			shipping		2.00
			total cost		

Send check or money order payable to:  
**Homax Products Inc.**  
**P.O. Box 5643**  
**Bellingham, WA 98227**

Name \_\_\_\_\_

Address \_\_\_\_\_

City \_\_\_\_\_

State \_\_\_\_\_ Zip \_\_\_\_\_

Telephone \_\_\_\_\_

Visa/ MC \_\_\_\_\_ Expiration Date \_\_\_\_\_